

U-LINE

# *Redefining* INTEGRATION

EXPLORE HOW U-LINE IS REDEFINING THE INDUSTRY  
STANDARD ON SEAMLESS INTEGRATION.





24" Refrigerator



## BUILT IN TO STAND OUT

Transform your clients' homes with U-Line's integrated refrigeration, perfectly marrying high-design aesthetics with practical functionality. Elevate spaces with appliances that seamlessly blend into the environment, offering both elegance and utility for a stunning, cohesive appearance.

With concealed, soft-close hinges, adjustable grilles, and continuous toe-kick capabilities, U-Line's features cater specifically to the design community, enhancing any space in the home. Bring your vision to life without compromising on quality or reliability, and offer your clients a lifestyle where sophistication meets everyday practicality.



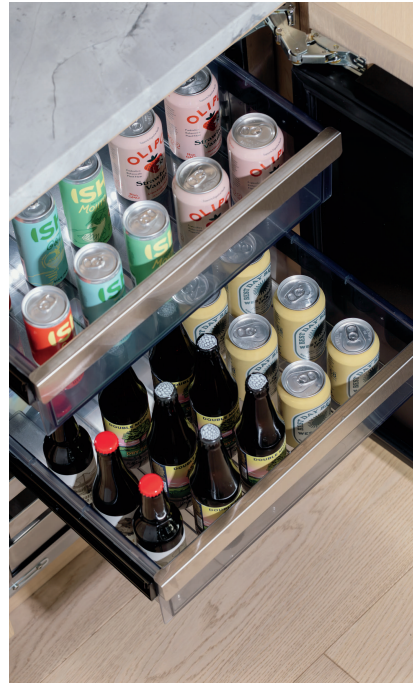


24" Beverage Center



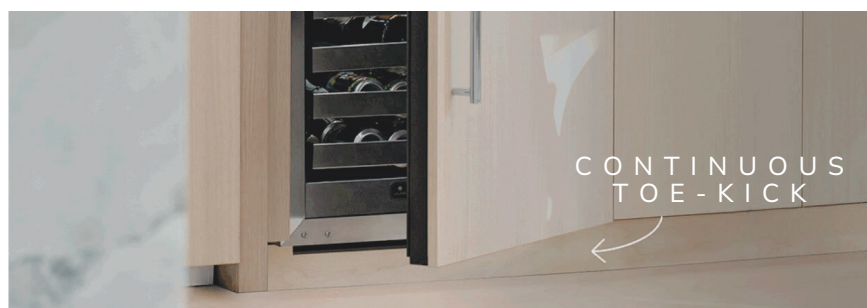
# Seamless INTEGRATION

## THE 5 CLASS COLLECTION



The U-Line 5 Class Collection combines sleek design and advanced technology to offer unmatched undercounter refrigeration. With truly seamless integration capabilities, it achieves a cohesive, luxurious look through custom overlay panels and toe-kicks that disappear into cabinetry, providing both style and functionality.

This collection features a concealed soft-close articulating hinge designed for zero clearance installations, ensuring ultra-tight reveals. It also includes a fixed stainless recessed grille, alongside an adjustable grille accessory that accepts a panel. Notably, when two units are placed side by side, there is no need for joining or heater kits. These products accommodate 15"/38cm, 18"/45cm, or 24"/60cm openings to ensure a perfect flush fit, and offers the easiest panel installation on the market without requiring any modifications to the panel. Simply remove the door gasket, align, and mount in place.



# THE ADJUSTABLE GRILLE

---

IT'S THE DETAILS THAT DEFINE EXCELLENCE.

Our adjustable grille accessory, designed specifically for 5 Class Collection models, offers a sophisticated solution for integrating appliances into kitchen cabinetry. This accessory is engineered to adjust forward to meet adjacent cabinetry and adapts to conceal uneven flooring. It accepts a solid custom toe-kick panel, leaving a one inch space for ventilation, enabling designers to maintain a consistent and attractive toe-kick run across the entire kitchen. This addition not only elevates the visual continuity but also ensures that the refrigeration unit blends effortlessly with the surrounding cabinetry, achieving a polished, cohesive look.

*"Modern, minimal, and thoughtfully designed. The panel-ready options made it easy to match with my cabinetry."*

- Preston Crawford



24" Beverage Center



## ARTICULATING HINGE

Our concealed articulating hinge, is completely hidden behind the door, allowing for effortless door movement without requiring additional clearance to open. This feature provides designers with greater flexibility in creating streamlined, space-efficient kitchen layouts. It enhances accessibility and integrates beautifully with surrounding cabinetry, allowing for bespoke design solutions that optimize both aesthetic appeal and functionality.

REVOLUTIONIZE YOUR KITCHEN DESIGN WITH ARTICULATING HINGES THAT OFFER UNPARALLELED FLEXIBILITY AND A FLAWLESS, STREAMLINED AESTHETIC .

---

*"U-Line provides me and my clients not only with multiple model options, but with the ability to integrate them seamlessly into my designs."*

- Matthew Quinn

# *Transformative* DESIGN

---

IT'S TIME TO CREATE SPACES THAT ARE AS VISUALLY  
STUNNING AS THEY ARE PRACTICALLY EFFICIENT.



U-Line takes pride in offering a range of products in 15", 24", and exclusive 18" widths, designed to create symmetry within cabinetry. Choose from a variety of configurations, including both glass and solid door options, allowing for customized aesthetics. This versatility ensures that U-Line products exceed the diverse design preferences and practical requirements of your clientele, offering unparalleled details and performance.

*Integration*  
LOOKBOOK

REFRIGERATION DRIVEN BY DESIGN SINCE 1962.

U-LINE